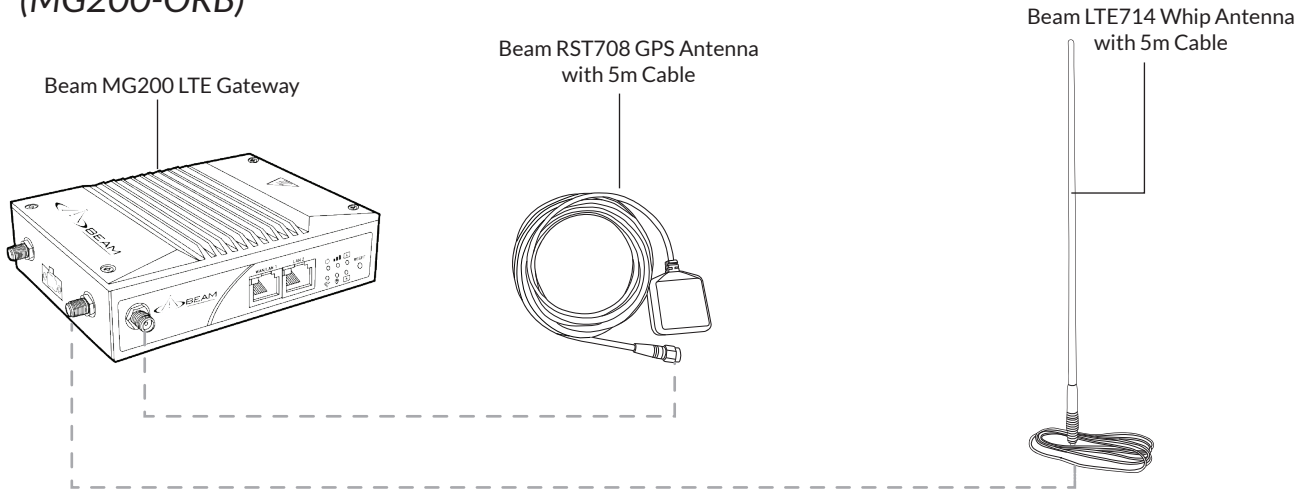


Installation Guide for Beam LTE Off-Road Bundle (MG200-ORB)



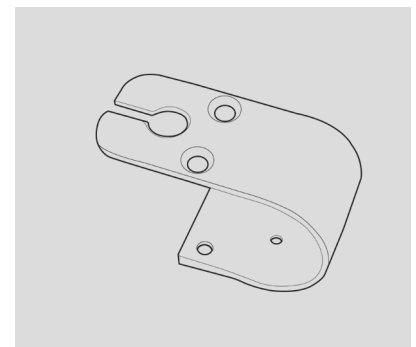
Package Contents



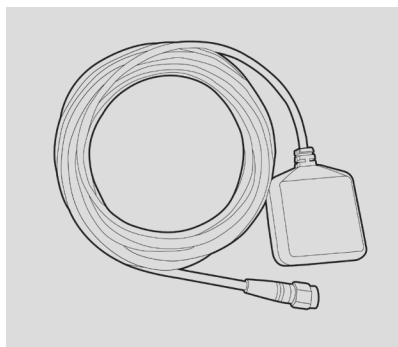
1 x Beam MG200 LTE Gateway Kit



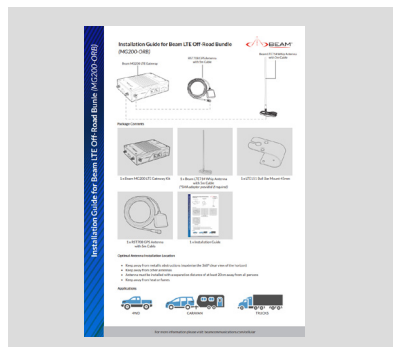
1 x Beam LTE714 Whip Antenna with 5m Cable
(*SMA adaptor provided if required)



1 x Beam LTE151 Bull Bar Mount 45mm



1 x Beam RST708 GPS Antenna with 5m Cable



1 x Installation Guide

Optimal Antenna Installation Location

- Keep away from metallic obstructions (maximise the 360° clear view of the horizon)
- Keep away from other antennas
- Antenna must be installed with a separation distance of at least 20cm away from all persons
- Keep away from heat or fumes

Applications



4WD



CARAVAN



TRUCKS

Antenna Installation

1. To install the Whip Antenna, refer to the Beam LTE714 Whip Antenna Installation Guide.



NOTE

For lightning protection, the mast or rail shall be connected to the common ground of the boat.

2. Cable Installation

- Run the cable through the engine bay
- Use cable ties to anchor the cable
- Keep cable away from heat and turning parts

3. Selecting a location to install the MG200 LTE Gateway

- Locate a cool, dry, well-ventilated area-away from any heat sources
- Check that the LED light and connectors on the LTE Gateway are visible and accessible
- Ensure adequate clearance for the cabling and Wi-Fi antennas

4. To install the MG200 LTE Gateway, refer to the MG200 LTE Gateway Quick Start Guide section 1-4.

5. Connect the SMA port of the LTE714 Whip Antenna Cable to the CELL MAIN port of the MG200 LTE Gateway.

6. Connect the SMA port of the RST708 GPS Antenna Cable to the GPS port of the MG200 LTE Gateway.

7. To complete the installation and configuration refer to the MG200 LTE Gateway Quick Start Guide section 5 and onwards.



030180 R01